

STANDING SEAM

LEAN-TO BOTTOM PLATE FLASHING

Cladco Lean-To Bottom Plate Flashings are used with our Lean-To Top Plates and Z-Bar Flashings (Notched) for a professional finish on a lean-to roof made with our Standing Seam Sheets.

COLOUR RANGE

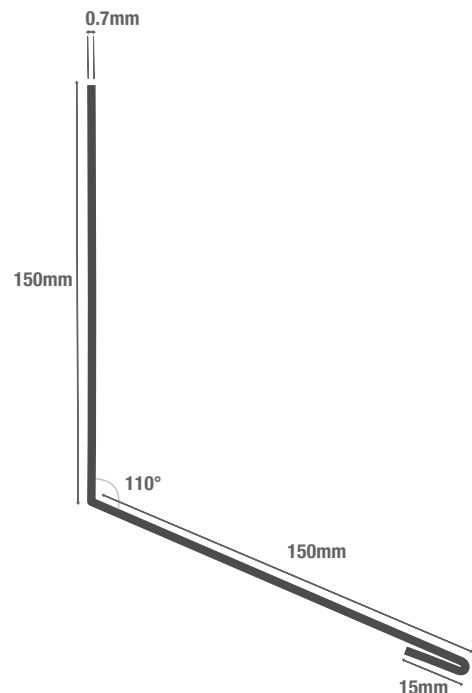


FLASHING SPECIFICATIONS

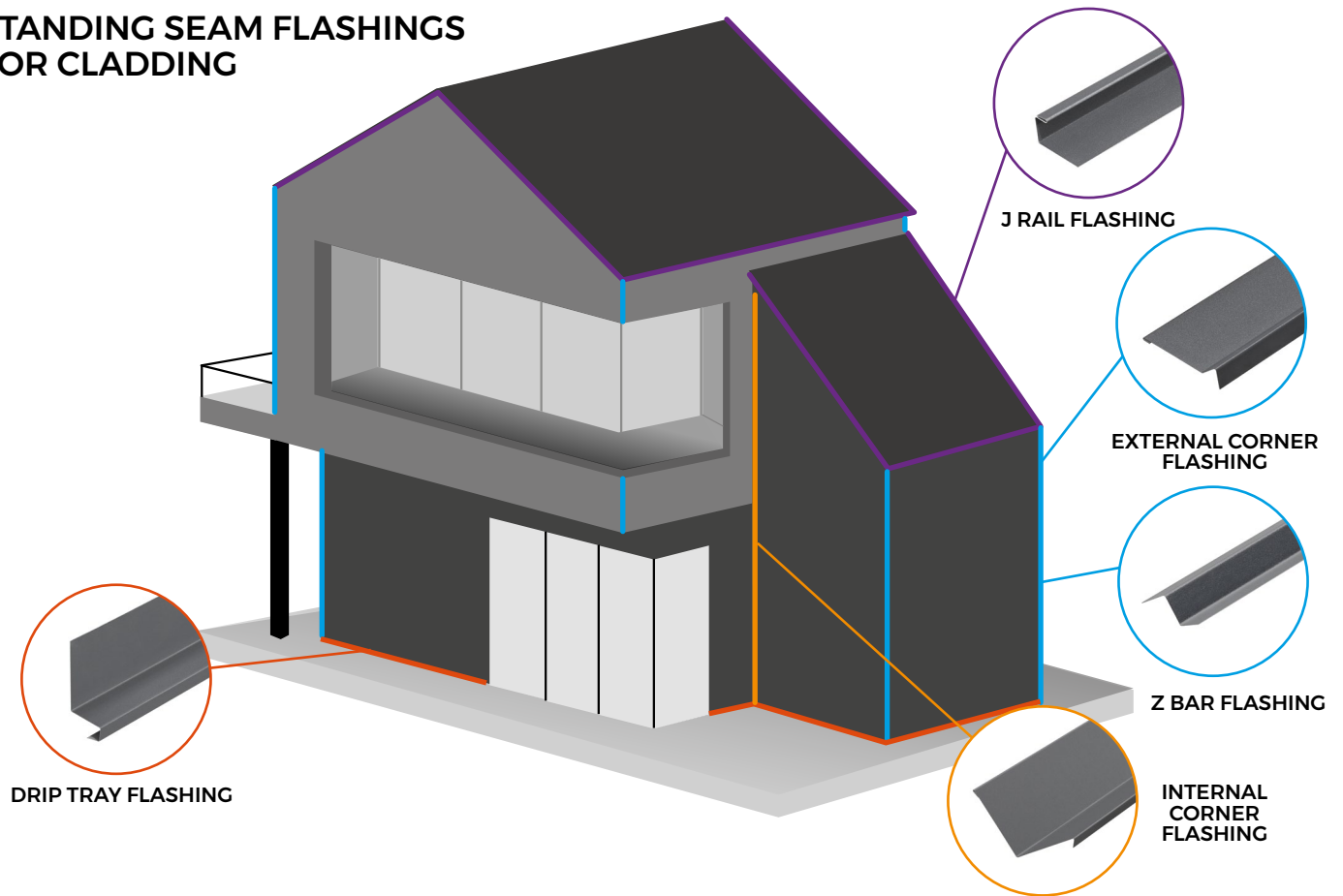
Length	3m
Dimensions	150mm x 150mm
Thickness	0.7mm
External Finish	GreenCoat® Pural BT

TEST CERTIFICATIONS

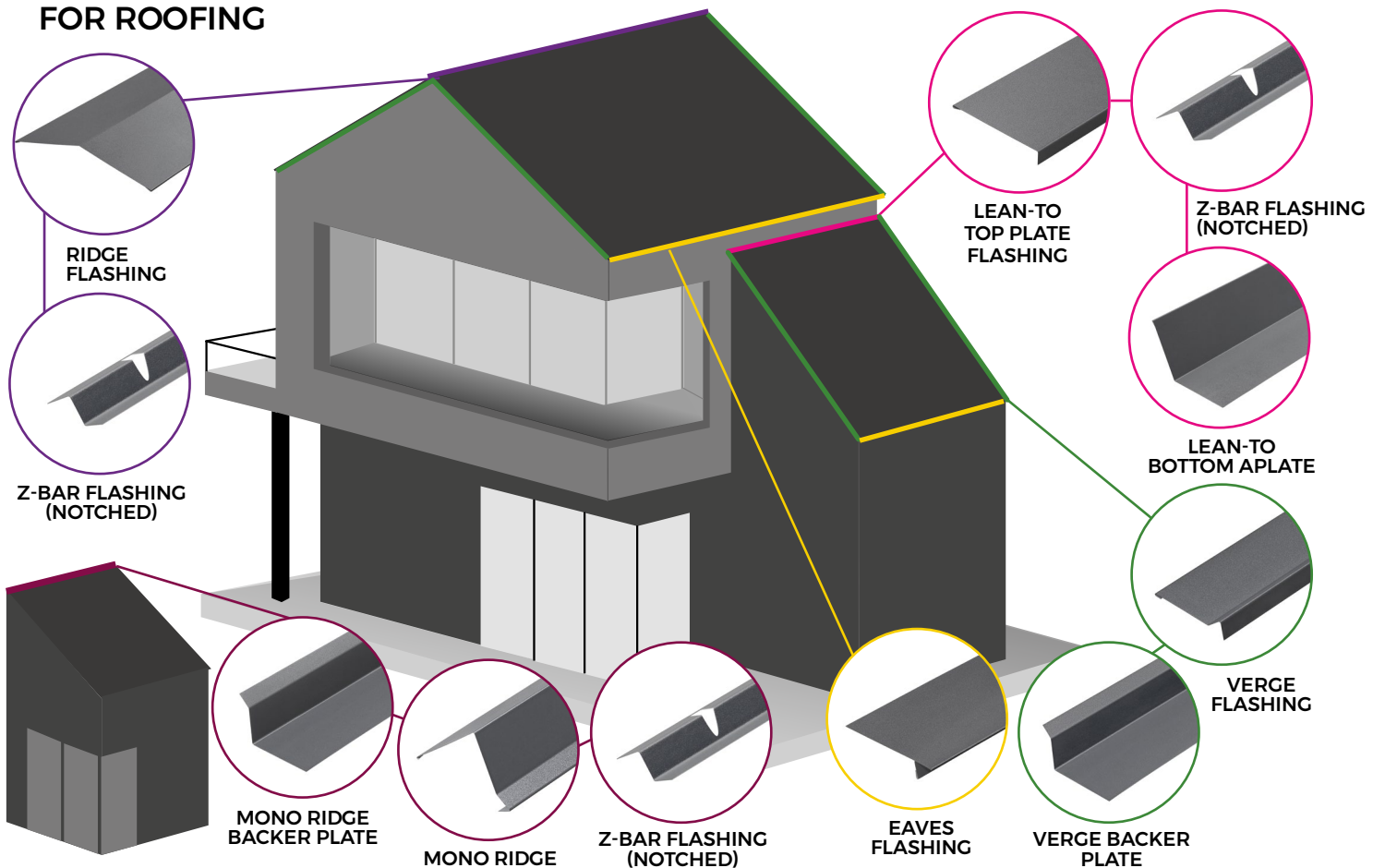
Quality	CE Marked (BS EN 14783:2013)
Fire Rating	Class A1 (BS EN 13501)



STANDING SEAM FLASHINGS FOR CLADDING



STANDING SEAM FLASHINGS FOR ROOFING



SUSTAINABLE MATERIALS

Cladco Standing Seam Roofing Sheets are manufactured from SSAB Steel coated with GreenCoat® Pural BT. The use of Swedish rapeseed oil, in place of traditional fossil fuel oils, promotes sustainable production methods which reduce our environmental footprint to provide you with a high-quality, A1 fire-rated roofing and cladding product.

AFTERCARE

Standing Seam Roof Sheets are low-maintenance and require little in the way of upkeep. We recommend, however, that annual inspection of the Sheeting is carried out, and any debris or dirt build up is removed or cleaned away.



Sustainable Coating Made From Swedish Rapeseed Oil



Made From High-Quality SSAB Nordic Quality Steel



Scratch, Corrosion And Weather Resistant Surface



Hidden Fixing with Annular Ring Nails



MATERIALS

Nordic quality, sustainable SSAB steel promotes sustainable production.



SURFACES

A durable GreenCoat® Pural BT coating with a matt finish, with or without ribs.



ACCESSORIES

Install your Lean-To Bottom Plate with our Lean-To Top Plate & Z-Bar Flashing (Notched).



RESISTANCE

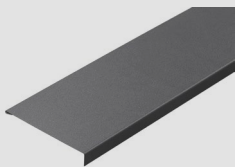
Pural BT coated Sheets are weather, corrosion, scratch and UV resistant.



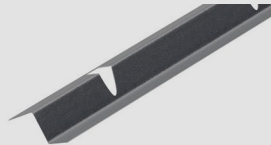
GUARANTEE

Sheets have a long life span of up to 50 years.

PRODUCT ACCESSORIES



LEAN-TO TOP PLATE FLASHING



Z-BAR FLASHING (NOTCHED)



CTI ADHESIVE AND SEALANT



ANNULAR RING NAILS



VENT 3 PRO BREATHABLE MEMBRANE

TOOLS REQUIRED



EAVES CLOSER



HANDHELD CIRCULAR SAW



RUBBER Mallet

For a full list of tools required, please refer to our Standing Seam Installation Guide.

www.cladco.co.uk

T: 01837 659901 E: info@cladco.co.uk

CLADCO
PROFILES