

# STANDING SEAM

## VERGE FLASHING

Cladco Verge Flashings are used in conjunction with our Verge Flashing Backer Plates and Standing Seam Roofing Sheets. When installed alongside our Backer Plates, our Verge Flashings create a seal on the ends of your roof which protects your building and gives a professional finish.

### COLOUR RANGE

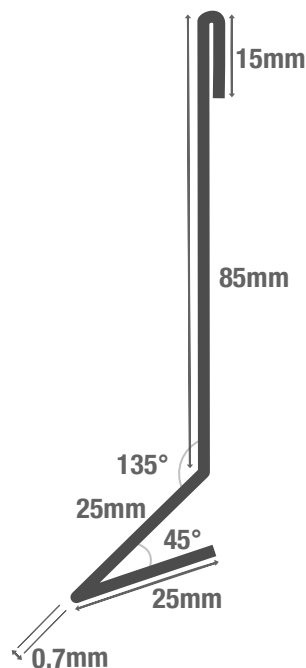


### FLASHING SPECIFICATIONS

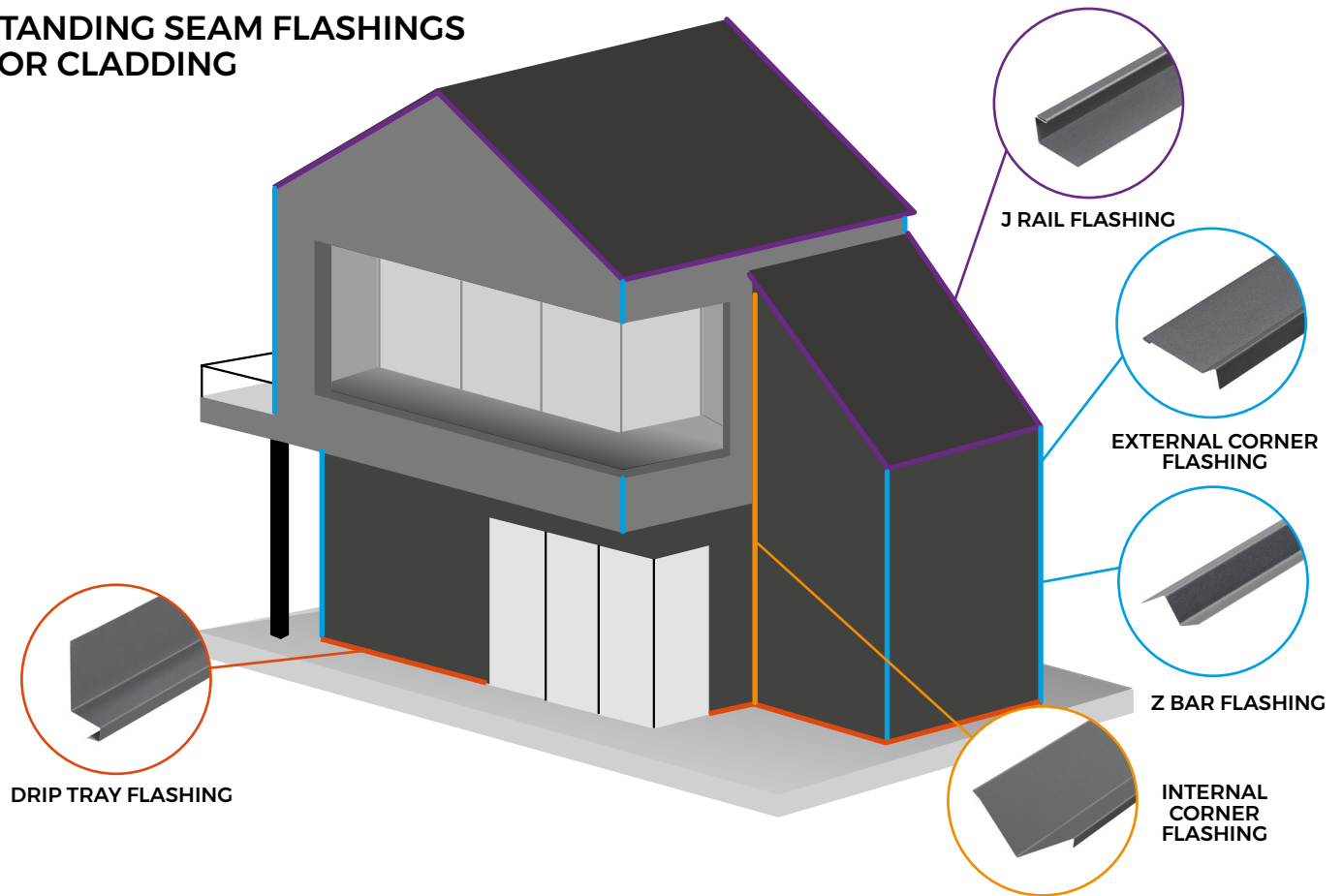
Length	3m
Dimensions	85mm x 25mm x 25mm
Thickness	0.7mm
External Finish	GreenCoat® Pural BT

### TEST CERTIFICATIONS

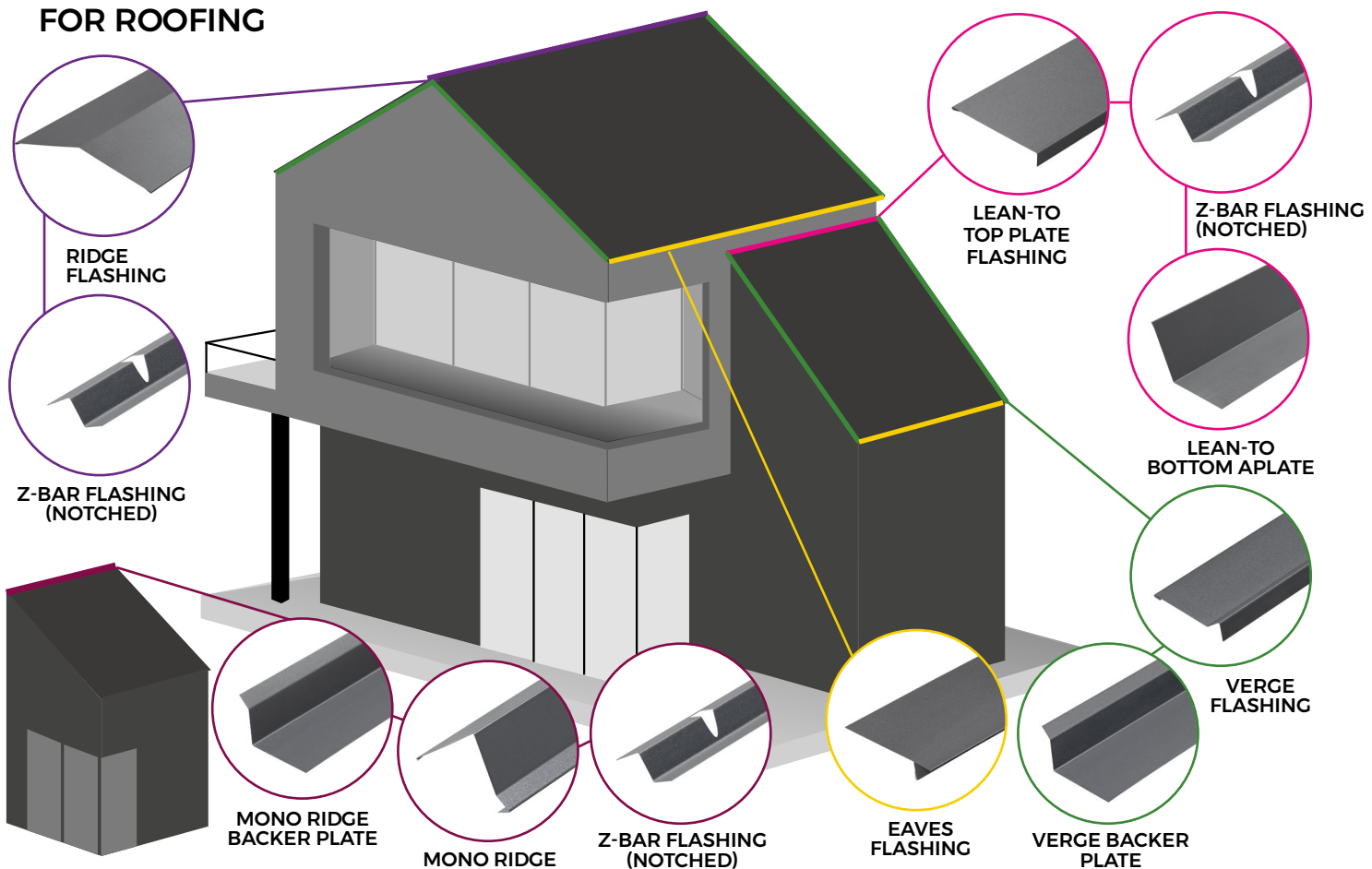
Quality	CE Marked (BS EN 14783:2013)
Fire Rating	Class A1 (BS EN 13501)



## STANDING SEAM FLASHINGS FOR CLADDING



## STANDING SEAM FLASHINGS FOR ROOFING

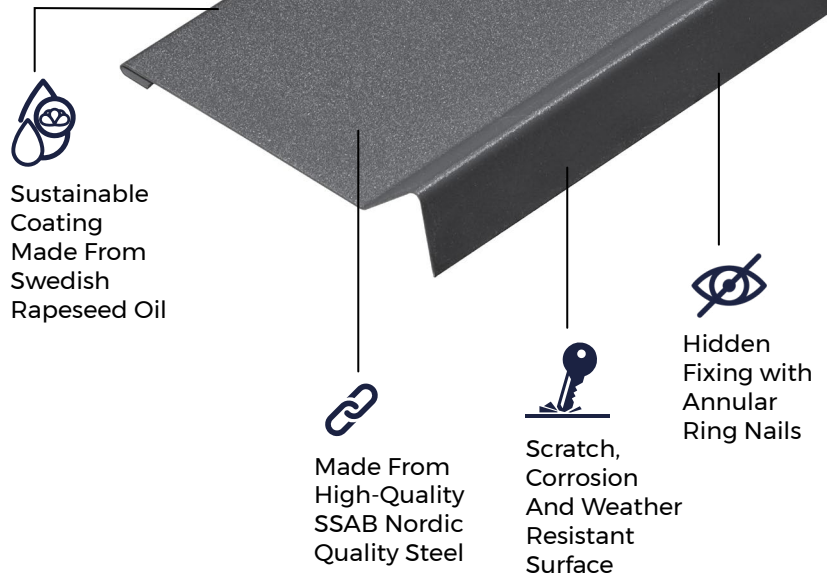







## SUSTAINABLE MATERIALS

Cladco Standing Seam Roofing Sheets are manufactured from SSAB Steel coated with GreenCoat® Pural BT. The use of Swedish rapeseed oil, in place of traditional fossil fuel oils, promotes sustainable production methods which reduce our environmental footprint to provide you with a high-quality, A1 fire-rated roofing and cladding product.

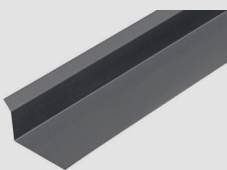
## AFTERCARE

Standing Seam Roof Sheets are low-maintenance and require little in the way of upkeep. We recommend, however, that annual inspection of the Sheeting is carried out, and any debris or dirt build up is removed or cleaned away.



 <p><b>MATERIALS</b></p> <p>Nordic quality, sustainable SSAB steel promotes sustainable production.</p>	 <p><b>SURFACES</b></p> <p>A durable GreenCoat® Pural BT coating with a matt finish, with or without ribs.</p>	 <p><b>ACCESSORIES</b></p> <p>Install your Verge Flashing alongside a range of Standing Seam Flashings.</p>	 <p><b>RESISTANCE</b></p> <p>Pural BT coated Sheets are weather, corrosion, scratch and UV resistant.</p>	 <p><b>GUARANTEE</b></p> <p>Sheets have a long life span of up to 50 years.</p>
---	--	---	---	---

## PRODUCT ACCESSORIES



VERGE FLASHING  
BACKER PLATE



TAPE MEASURE



TIN SNIPS



ANNULAR RING NAILS



CTI ADHESIVE  
AND SEALANT

## TOOLS REQUIRED



SEAMING  
PLIERS



HANDHELD  
CIRCULAR SAW



RUBBER  
MALLET

For a full list of tools required, please refer to our Standing Seam Installation Guide.

[www.cladco.co.uk](http://www.cladco.co.uk)

T: 01837 659901 E: [info@cladco.co.uk](mailto:info@cladco.co.uk)

**CLADCO**  
PROFILES